

PHOTOMETRIC TEST REPORT

DECOR PRO ROUND FIXED -
TEXTURED WHITE - 4002643

astro

DECOR PRO ROUND FIXED - TEXTURED

astro

LIGHT EFFICIENCY:

111 Lumen/Watt

LIGHT QUALITY:

CRI: 95.7

COLOR TEMPERATURE:

3035 K

OUTPUT: 1317 lm

PEAK: 7081 cd

POWER: 11.9 W

PF: 0.95



Tracking number: [n/a](#)

Product name:

Decor Pro Round Fixed - Textured White - 4002643

Item number:

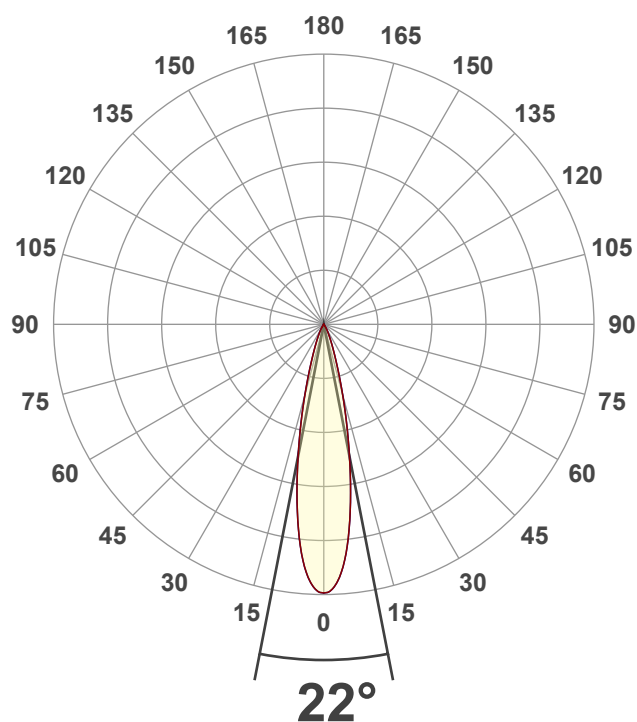
DRF-TW-HE30G1-15G1-X-D1

Date and time:

31/01/2025 08:48:38

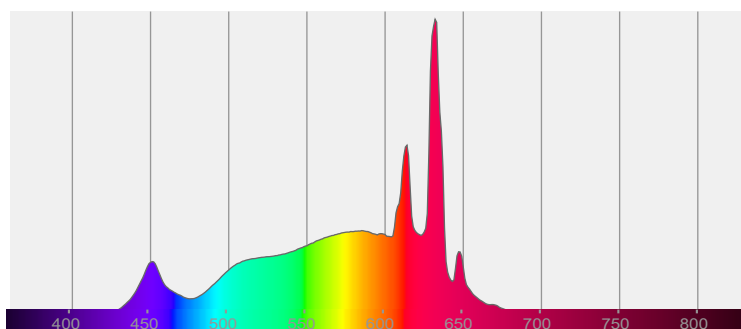
Description:

IP20 LED Downlight

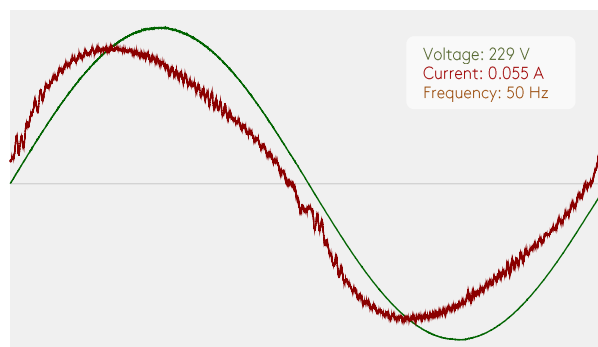


CIE 1931
x: 0.437
y: 0.408

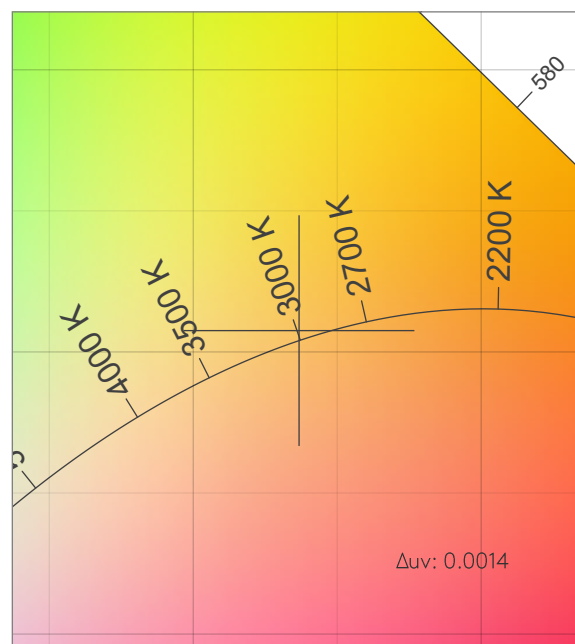
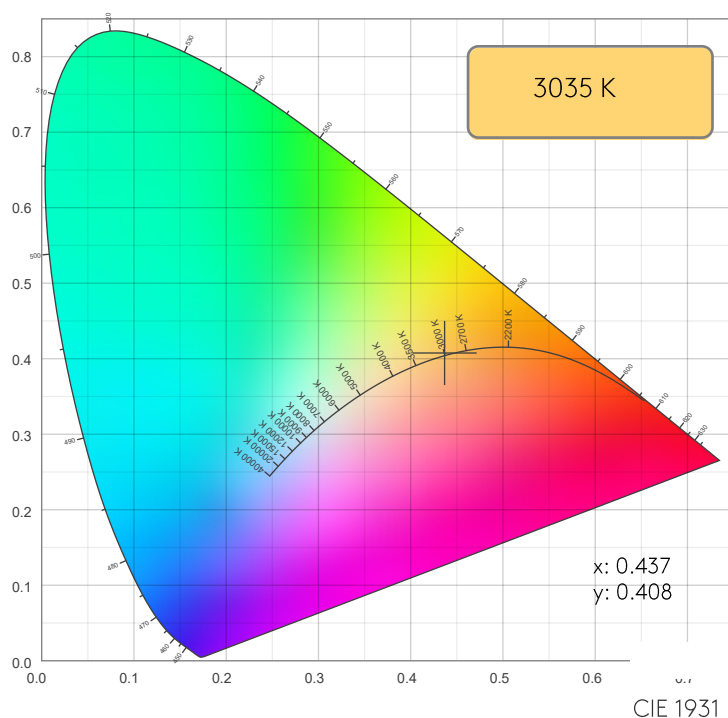
SPECTRA



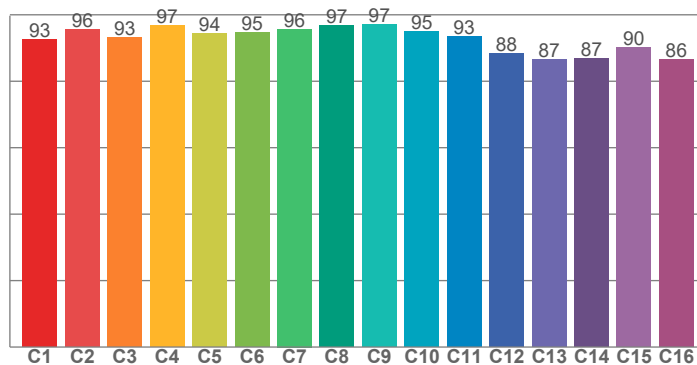
POWER



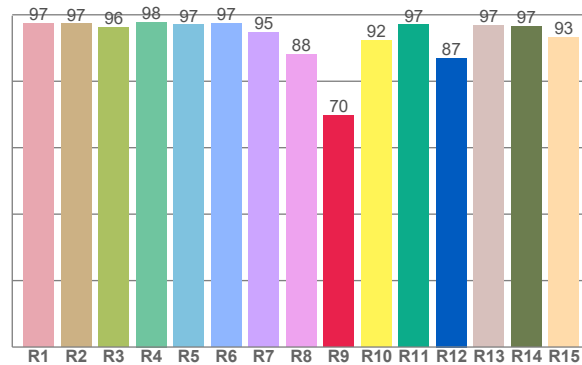
COLOR DETAILS



TM30: 93.2



CRI: 95.7 (R1-R8)



CRI R values, only R1-R8 are used to calculate final CRI value

R1	R2	R3	R4	R5	R6	R7	R8	R9	R10	R11	R12	R13	R14	R15
97.4	97.3	96.2	97.8	97.0	97.5	94.6	88.1	69.7	92.2	97.0	87.0	96.9	96.6	93.1

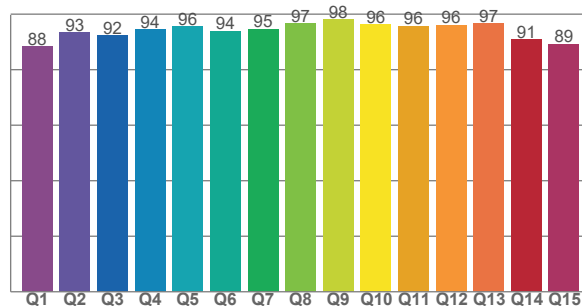
TM30 C values, 16 binned values out of total of 99 C values

C1	C2	C3	C4	C5	C6	C7	C8	C9	C10	C11	C12	C13	C14	C15	C16
92.5	95.5	93.3	96.8	94.5	94.6	95.7	96.8	97.1	94.9	93.4	88.4	86.6	86.9	90.1	86.5

CQS Q values

Q1	Q2	Q3	Q4	Q5	Q6	Q7	Q8	Q9	Q10	Q11	Q12	Q13	Q14	Q15
88.3	93.3	92.3	94.4	95.5	93.9	94.7	96.7	98.1	96.3	95.8	96.1	96.6	90.9	89.2

CQS: 93.3



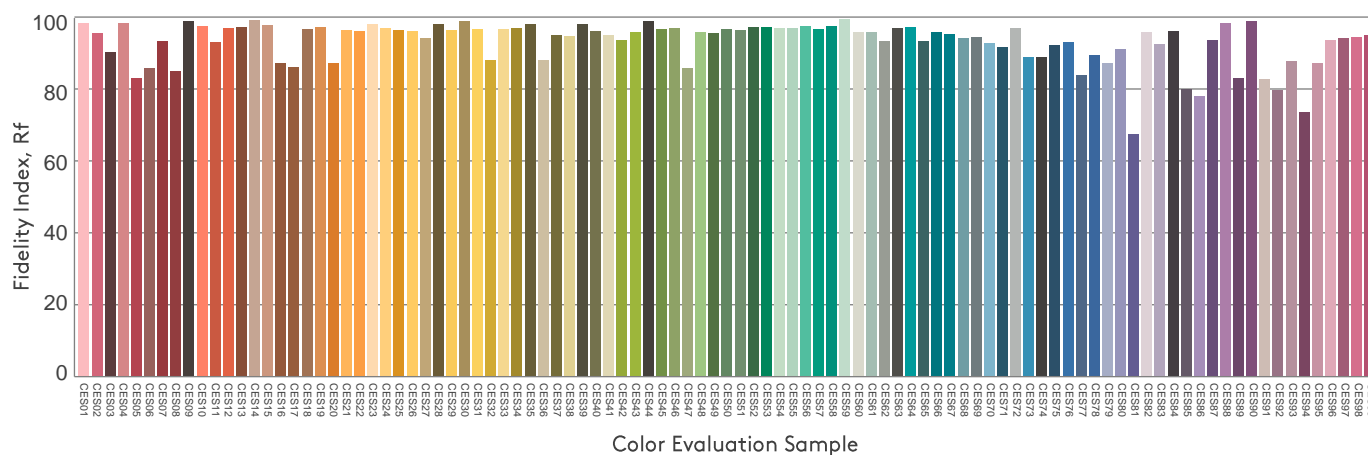
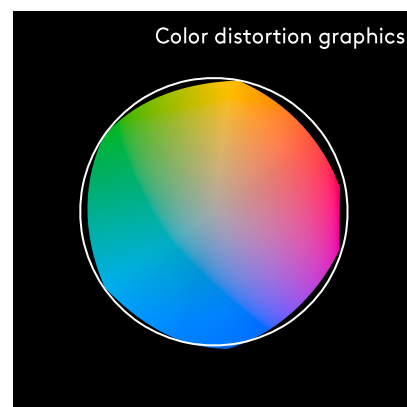
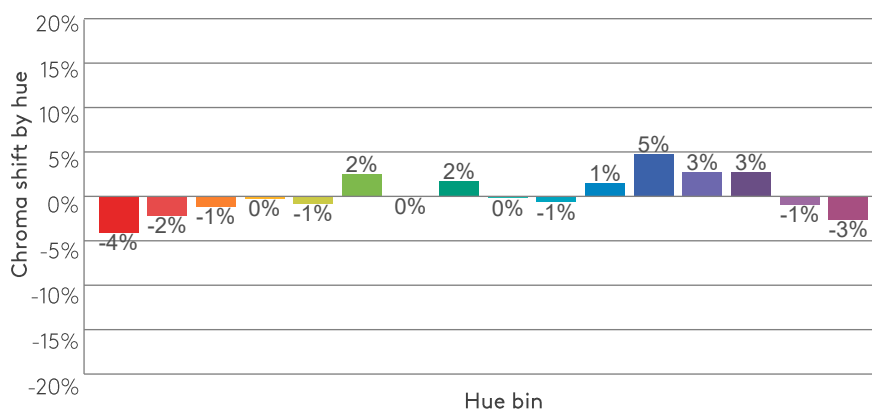
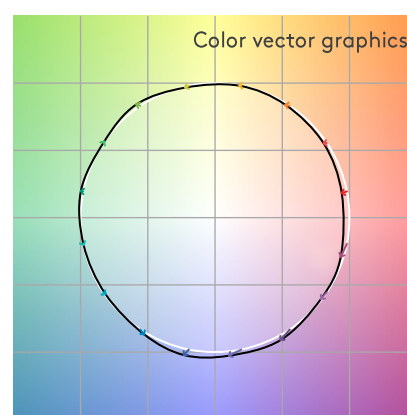
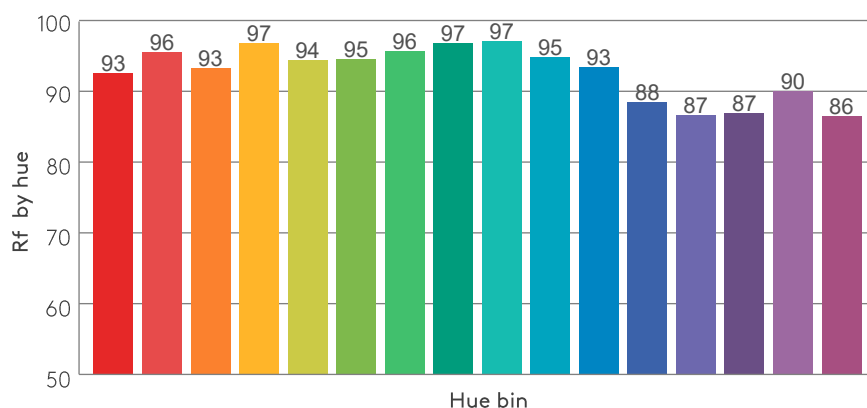
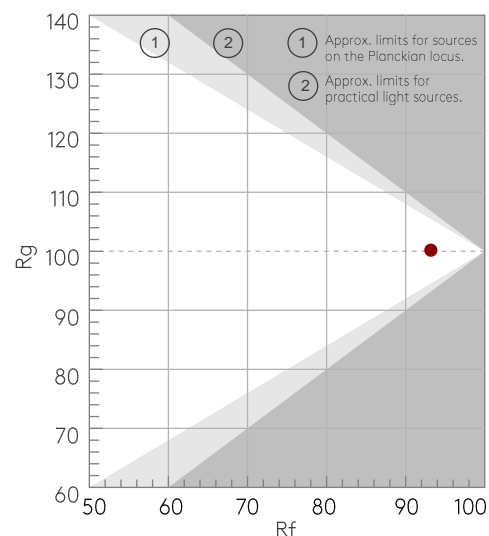
COLOR PARAMETERS

Color temperature	Color rendering index	Red component	Color fidelity	Color gamut	Color quality scale	Color coordinate cie 1931	Color coordinate cie 1931	Color coordinate	Color coordinate	Color deviation from black body
CCT	CRI	CRI R9	TM30 Rf	TM30 Rg	CQS	x	y	u	v	Δuv
3035 K	95.7	69.7	93.2	100.2	93.3	0.437	0.408	0.249	0.348	0.0014

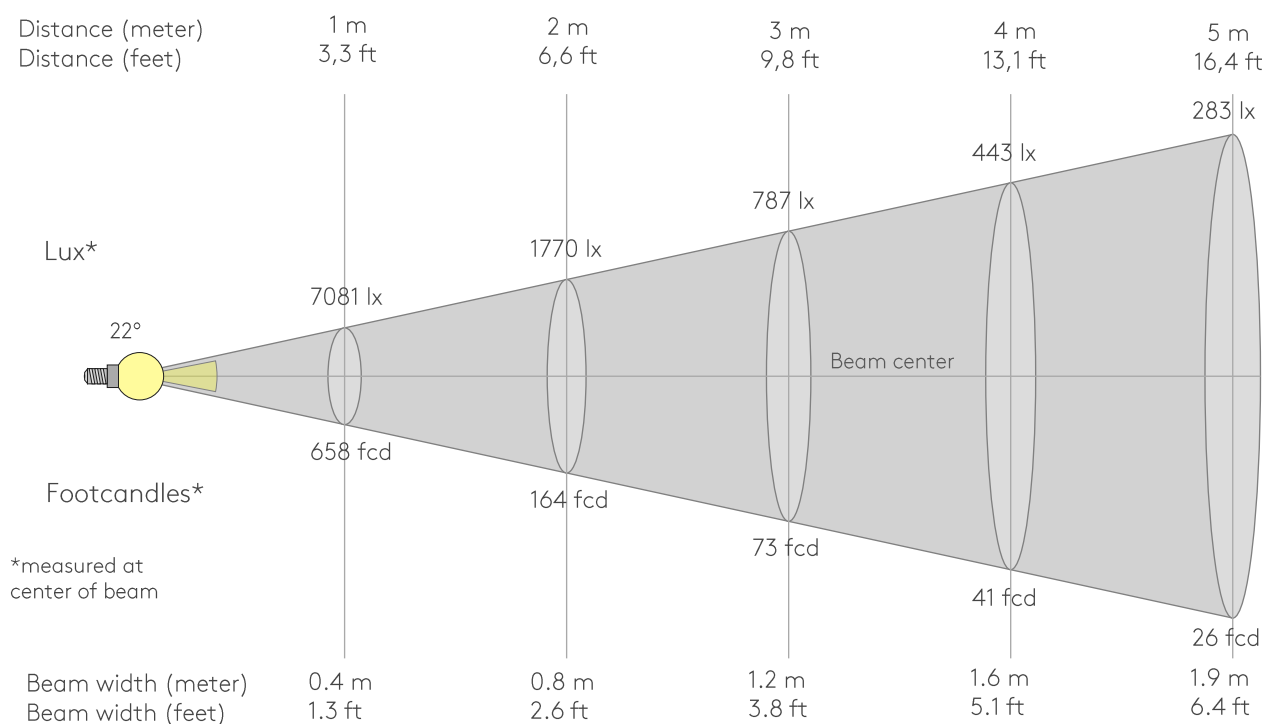
Rf 93.2
Fidelity index Rf

Rg 100.2
Gammut index Rg

Hue Bin	Rf	Graphic shifts (%)	
		Chroma	Hue
1	93	-4%	-1%
2	96	-2%	1%
3	93	-1%	3%
4	97	0%	1%
5	94	-1%	3%
6	95	2%	2%
7	96	0%	-1%
8	97	2%	0%
9	97	0%	1%
10	95	-1%	2%
11	93	1%	4%
12	88	5%	-3%
13	87	3%	-10%
14	87	3%	-10%
15	90	-1%	-6%
16	86	-3%	-10%



BEAM DETAILS



Beam intensities from 1-20m

1m	2m	3m	4m	5m	6m	7m	8m	9m	10m	11m	12m	13m	14m	15m	16m	17m	18m	19m	20m
3.3ft	6.6ft	9.8ft	13.1ft	16.4ft	19.7ft	23ft	26.2ft	29.5ft	32.8ft	36.1ft	39.4ft	42.7ft	45.9ft	49.2ft	52.5ft	55.8ft	59.1ft	62.3ft	65.6ft
7081lx	1770lx	787lx	443lx	283lx	197lx	145lx	111lx	87lx	71lx	59lx	49lx	42lx	36lx	31lx	28lx	25lx	22lx	20lx	18lx
657.8fcd	164.5fcd	73.1fcd	41.1fcd	26.3fcd	18.3fcd	13.4fcd	10.3fcd	8.1fcd	6.6fcd	5.4fcd	4.6fcd	3.9fcd	3.4fcd	2.9fcd	2.6fcd	2.3fcd	2fcd	1.8fcd	1.6fcd

Intensities in 0° c-plane

0°	2°	4°	6°	8°	10°	12°	14°	16°	18°	20°	22°	24°	26°	28°	30°	32°	34°	36°	38°
7081	6962	6564	5891	4997	4026	3094	2280	1607	1111	779	557	401	290	212	152	110	80	53	39
100%	98%	93%	83%	71%	57%	44%	32%	23%	16%	11%	8%	6%	4%	3%	2%	2%	1%	1%	1%

Intensities in 90° c-plane

0°	2°	4°	6°	8°	10°	12°	14°	16°	18°	20°	22°	24°	26°	28°	30°	32°	34°	36°	38°
7081	6962	6564	5891	4997	4026	3094	2280	1607	1111	779	557	401	290	212	152	110	80	53	39
100%	98%	93%	83%	71%	57%	44%	32%	23%	16%	11%	8%	6%	4%	3%	2%	2%	1%	1%	1%

Intensities in 180° c-plane

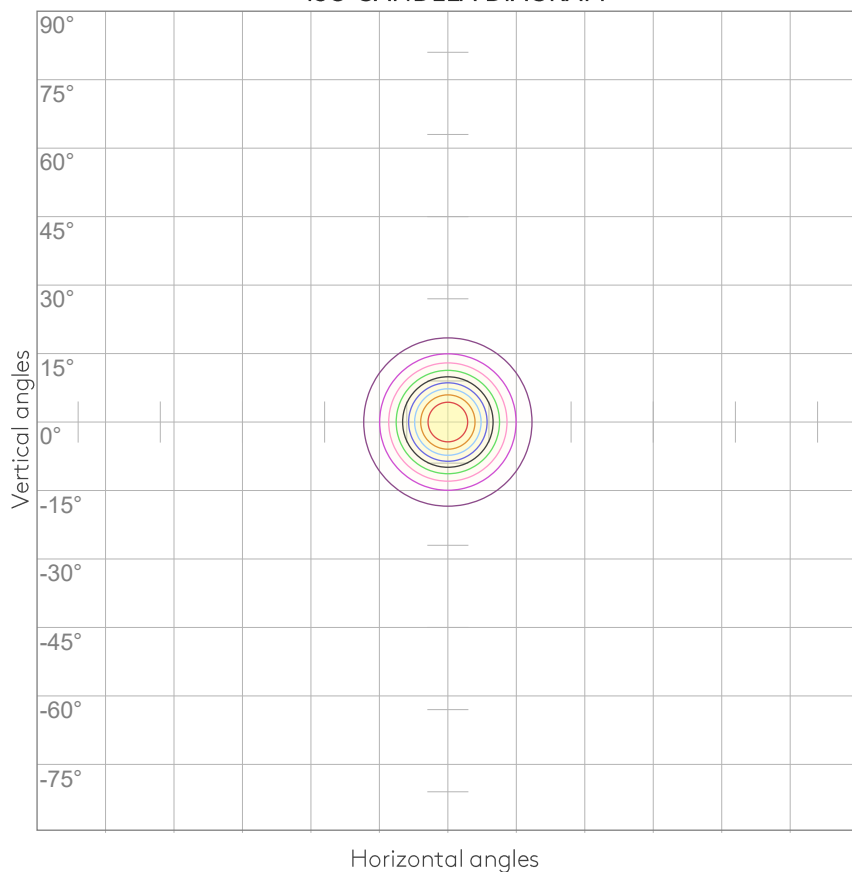
0°	2°	4°	6°	8°	10°	12°	14°	16°	18°	20°	22°	24°	26°	28°	30°	32°	34°	36°	38°
7081	6962	6564	5891	4997	4026	3094	2280	1607	1111	779	557	401	290	212	152	110	80	53	39
100%	98%	93%	83%	71%	57%	44%	32%	23%	16%	11%	8%	6%	4%	3%	2%	2%	1%	1%	1%

Intensities in 270° c-plane

0°	2°	4°	6°	8°	10°	12°	14°	16°	18°	20°	22°	24°	26°	28°	30°	32°	34°	36°	38°
7081	6962	6564	5891	4997	4026	3094	2280	1607	1111	779	557	401	290	212	152	110	80	53	39
100%	98%	93%	83%	71%	57%	44%	32%	23%	16%	11%	8%	6%	4%	3%	2%	2%	1%	1%	1%

Beam angle 50%	Field angle 10%	Cutoff angle 2,5%	Intensity ratio in 120° cone	Intensity ratio in 90° cone
22°	41.2°	58.2°	97.9%	97.5%

ISO CANDELA DIAGRAM



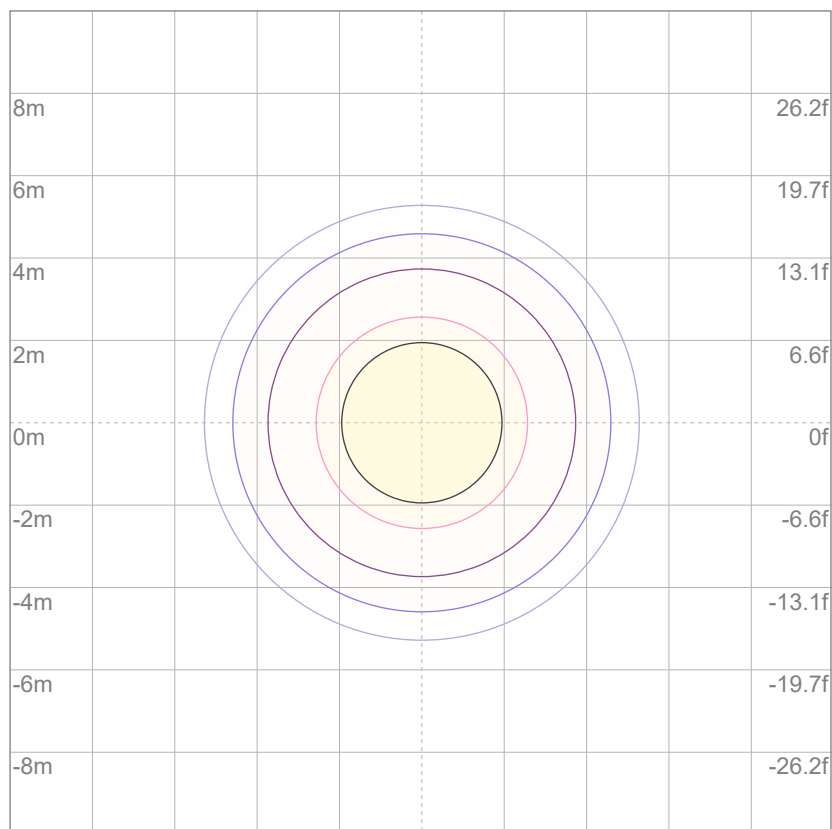
10%	708 cd
20%	1416 cd
30%	2124 cd
40%	2832 cd
50%	3540 cd
60%	4248 cd
70%	4957 cd
80%	5665 cd
90%	6373 cd

Conditions:

Number of c-planes: 8

Candela at center: 7081 cd

ISO LUX DIAGRAM



Mounting height: 10 meters (33 feet)

3%	2.12 lx
5%	3.54 lx
10%	7.08 lx
30%	21.2 lx
50%	{LUX_10M50} lx

Conditions:

Number of c-planes: 8

Lux at center: 70.8 lx

Lux distribution on a surface when lamp is mounted at 10 meters from the surface.

UGR

GLARE EVALUATION ACCORDING TO UGR

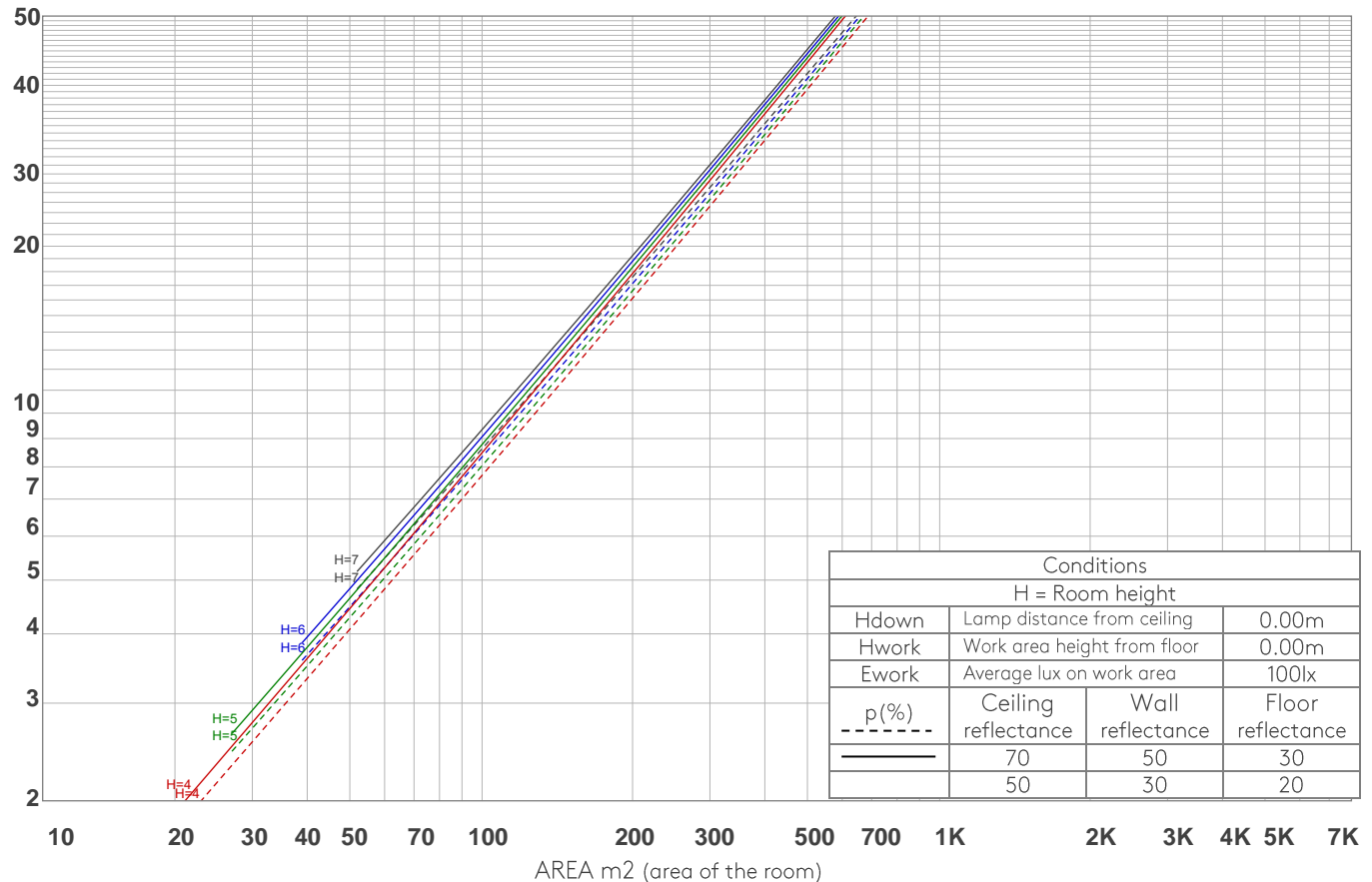
p Ceiling		70	70	50	50	30	70	70	50	50	30
p Walls		50	30	50	30	30	50	30	50	30	30
p Floor		20	20	20	20	20	20	20	20	20	20
Room size X Y		Viewing direction at right angles to lamp axis					Viewing direction parallel to lamp axis				
2H	2H	12.2	12.5	12.2	12.7	13.0	12.2	12.5	12.2	12.7	13.0
	3H	12.2	12.7	12.6	12.9	13.1	12.2	12.7	12.6	12.9	13.1
	4H	12.5	13.0	12.9	13.3	13.5	12.5	13.0	12.9	13.3	13.5
	6H	13.1	13.6	13.5	13.9	14.3	13.1	13.6	13.5	13.9	14.3
	8H	13.6	14.0	13.9	14.4	14.8	13.6	14.0	13.9	14.4	14.8
	12H	14.2	14.7	14.6	15.0	15.5	14.2	14.7	14.6	15.0	15.5
4H	2H	11.9	12.4	12.3	12.7	12.9	11.9	12.4	12.3	12.7	12.9
	3H	12.3	12.7	12.7	13.1	13.5	12.3	12.7	12.7	13.1	13.5
	4H	12.8	13.2	13.2	13.6	14.1	12.8	13.2	13.2	13.6	14.1
	6H	13.7	14.1	14.2	14.4	14.8	13.7	14.1	14.2	14.4	14.8
	8H	14.3	14.7	14.9	15.1	15.5	14.3	14.7	14.9	15.1	15.5
	12H	15.2	15.5	15.7	16.0	16.4	15.2	15.5	15.7	16.0	16.4
8H	4H	13.0	13.4	13.5	13.7	14.1	13.0	13.4	13.5	13.7	14.1
	6H	14.2	14.5	14.7	14.9	15.5	14.2	14.5	14.7	14.9	15.5
	8H	15.2	15.4	15.7	15.9	16.5	15.2	15.4	15.7	15.9	16.5
	12H	16.4	16.5	17.0	17.1	17.7	16.4	16.5	17.0	17.1	17.7
12H	4H	13.0	13.3	13.6	13.8	14.2	13.0	13.3	13.6	13.8	14.2
	6H	14.5	14.6	15.0	15.2	15.8	14.5	14.6	15.0	15.2	15.8
	8H	15.5	15.6	16.1	16.2	16.8	15.5	15.6	16.1	16.2	16.8
Variation of the observer position for the luminaire distance S											
S = 1.0H		1.7 / -0.6					1.7 / -0.6				
S = 1.5H		3.3 / -0.6					3.3 / -0.6				
S = 2.0H		4.8 / -0.8					4.8 / -0.8				
Standard table		n/a					n/a				
Correction summand		n/a					n/a				
Corrected glare indices referring to 1317 lm total luminous flux											

COEFFICIENTS OF UTILIZATION

Ceiling reflectance	80				70				50			30			10			0
Wall reflectance	70	50	30	10	70	50	30	10	50	30	10	50	30	10	50	30	10	0
Floor reflectance	20	20	20	20	20	20	20	20	20	20	20	20	20	20	20	20	20	0
RCR	(RCR: Room Cavity Ratio) Room Values are expressed as percentage of Lumens delivered to the task surface																	
0	119	119	119	119	116	116	116	116	110	110	110	105	105	105	101	101	101	99
1	115	112	111	109	112	110	109	107	106	105	103	102	101	100	98	98	97	95
2	111	107	104	102	109	106	103	101	102	100	98	99	97	96	96	95	94	92
3	107	103	99	96	106	101	98	96	99	96	94	96	94	92	94	92	91	89
4	104	99	95	92	103	98	94	91	96	93	90	94	91	89	92	90	88	87
5	101	95	91	88	100	95	91	88	93	90	87	91	88	86	90	87	86	84
6	98	92	88	85	97	92	88	85	90	87	84	89	86	84	88	85	83	82
7	96	90	86	83	95	89	85	82	88	84	82	87	84	81	86	83	81	80
8	93	87	83	80	92	86	83	80	85	82	80	84	82	79	84	81	79	78
9	91	85	81	78	90	84	80	78	83	80	78	83	79	77	82	79	77	76
10	89	82	79	76	88	82	78	76	81	78	76	81	78	75	80	77	75	74

LAMPS (number of lamps)

LUMINAIRE BUDGETARY DIAGRAM



ZONAL LUMEN SUMMARY

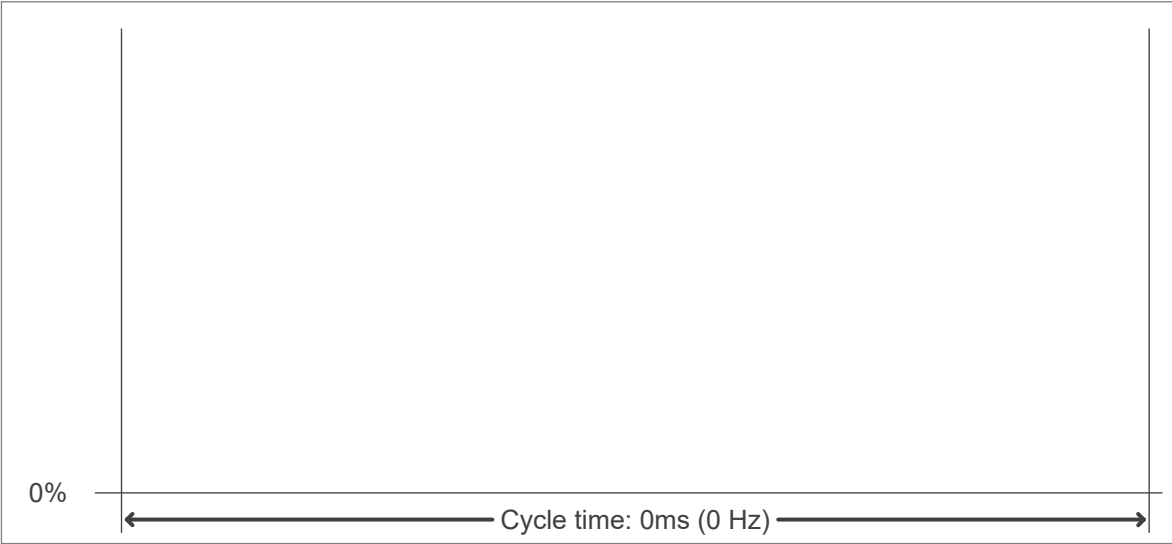
0°-10°	10°-20°	20°-30°	30°-40°	40°-50°	50°-60°	60°-70°	70°-80°	80°-90°
523 lm	541 lm	168 lm	46.8 lm	6.49 lm	3.63 lm	2.86 lm	2.81 lm	2.90 lm
90°-100°	100°-110°	110°-120°	120°-130°	130°-140°	140°-150°	150°-160°	160°-170°	170°-180°
2.89 lm	2.75 lm	2.63 lm	2.45 lm	2.28 lm	2.13 lm	1.95 lm	1.31 lm	0.371 lm

FLICKER

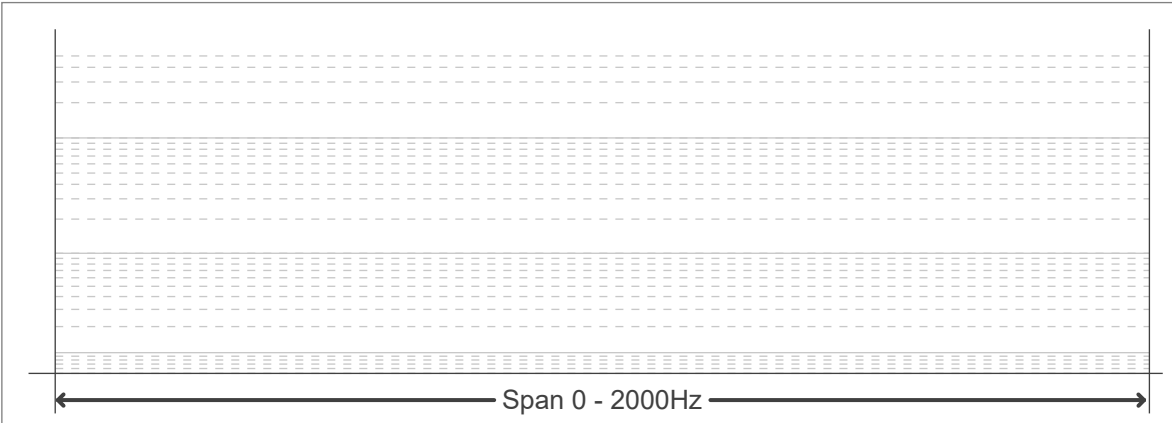
FLICKER CURVE (COMPLETE SAMPLED)



FLICKER FRAME (FRAME OF ONE FLICKER)



FLICKER FFT (FREQUENCY SCOPE OF FLICKER)



FLICKER RESULTS:

Flicker frequency:	n/a Hz
Flicker index:	n/a
Flicker percentage:	n/a %
SVM: (Visual flicker)	n/a

FLICKER CONDITIONS:

Sample rate:	n/a samples/second
--------------	--------------------